

Features

- Self contained flicker fixture.
- 40 Lumens
- Flicker Flame functions with programmable Levels, Randomness, and Fade Rate.
- No external controller required
- Wireless IR Programming
- Hue Shifting



Candle Insert
(shown with optional cover)

Description:

The Candle Insert is designed to fit a Candelabra (E12) candle sleeve allowing a realistic flicker effect into small candelabras, or lanterns. It may be used to retrofit existing fixtures by adding a small power supply in the Fixture or J-Box

Programming is done with a PC application, and a custom IR Transmitter. This allows for easy field programming of the flicker effect after installation.

Flicker Flame

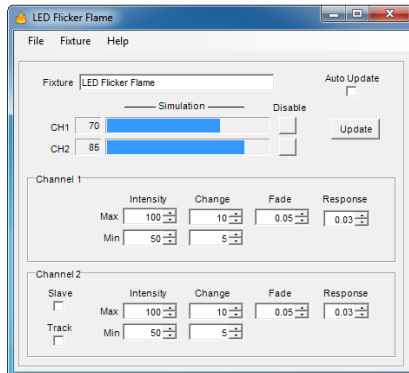
Realistic Flicker flame, Fire, and Candle effects can be created for each fixture. The effects are individually programmable with a variety of modes to simulate anything from glowing coals, to a raging inferno. No lookup tables or pre-recorded effects are used; each channel is truly random and unique.

Hue Shifting

As the intensity changes the color temperature varies between white and amber to give a more realistic look. The amount of shifting is programmable, or the lamp can be set to a fixed color temperature between 2200K (warm white) and 1800K (amber)

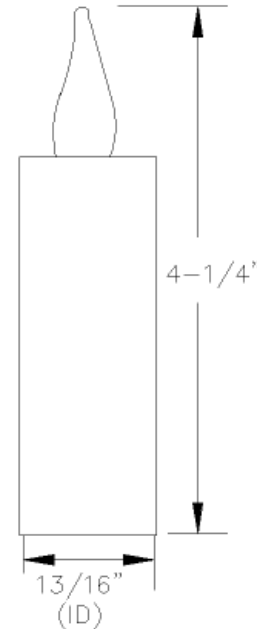
Programming:

The included PC application and IR Remote allows for easy programming from a PC or Laptop.



Dimensions

Shown with typical cover, cover height may vary depending upon application.



Specifications:

Power Input: 5V DC 100ma
 Environment: Dry or Damp locations

Ordering Information:

Candle Insert

APV-8-5 5V 8W Power Supply (100-240 VAC)

Products are custom engineered to meet your requirements.
 Contact us to discuss your application.

CHTC Enterprises, LLC
 20130 NW Nestucca Dr.
 Portland, OR 97229 USA

www.CHTC Enterprises.com
 503-350-0704
 sales@chtcenterprises.com

© 2018 CHTC Enterprises, LLC All Rights Reserved.
 Specifications subject to change without notice.
 Specification applicable to standard products only.
 Information furnished is believed to be accurate and reliable.
 However, no responsibility is assumed for its use.

