

Features

- Self contained flicker fixture.
- Uses G9 lamp Covers
- 140 Lumens 2200K 80 CRI
- Flicker Flame functions with programmable Levels, Randomness, and Fade Rate.
- No external controller required
- Wireless IR Programming
- Optional Hue Shifting
- Optional DMX-512 Control
- E12 Candelabra Base



E12 with Flame Tip

Description:

The E12 flicker lamp features a threaded base which will accommodate standard G9 Lamp Covers. Depending upon the cover used, the light can be point source or diffuse, in a wide variety of shapes and sizes,

Programming is done with a PC application, and a custom IR Transmitter. This allows for easy field programming of the flicker effect after installation.

Flicker Flame

Realistic Flicker flame, Fire, and Candle effects can be created for each fixture. The effects are individually programmable with a variety of modes to simulate anything from glowing coals, to a raging inferno. No lookup tables or pre-recorded effects are used; each channel is truly random and unique.

Hue Shifting / Adjustable Color Temperature

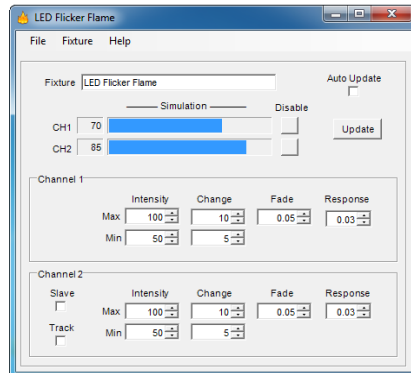
The Hue Shifting function varies the Color Temperature based on intensity for a more realistic flame, or the CCT may be adjusted anywhere between 2200 (Warm white) and 1800K (Amber)

DMX-512 Control

The flicker effect can be modified by a remote DMX-512 controller. Any of the flicker effect settings may be mapped to a DMX-512 dimmer channel.

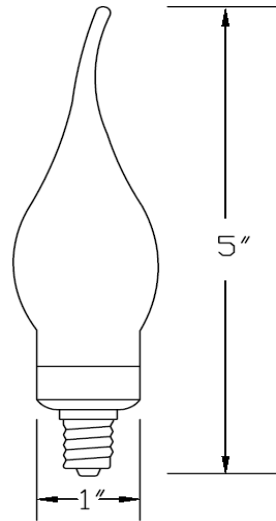
Programming:

The included PC application and IR Remote allows for easy programming from a PC or Laptop.



Dimensions / Mounting:

The lamp is supplied with an E12 Candelabra base.



Specifications:

Power Input: 12V DC 150ma
 Environment: Damp or Dry locations

Ordering Information:

Supplied with a frosted flame tip cover. Other covers are available or can be customer supplied.
 E12-75 2200K Color Temperature
 E12-75-HS Hue Shifting (2200K – 1800K)

Products can be custom engineered to meet your requirements.
 Contact us to discuss your application.

CHTC Enterprises, LLC
 20130 NW Nestucca Dr.
 Portland, OR 97229 USA

www.CHTC Enterprises.com
 503-350-0704
 sales@chtcenterprises.com

© 2019 CHTC Enterprises, LLC All Rights Reserved.
 Specifications subject to change without notice.
 Specification applicable to standard products only.
 Information furnished is believed to be accurate and reliable.
 However, no responsibility is assumed for its use.

