

Features

- Self contained flicker fixture.
- 40 Lumens
- Flicker Flame functions with programmable Levels, Randomness, and Fade Rate.
- No external controller required
- Wireless IR Programming
- Hue Shifting
- 1/8 NPS Threaded Base
- Suitable for Wet Locations



TC-AT

Description:

The TC flicker lamp is a small compact fixture for hiding into candles, teacups or other tight locations and is weatherproof for outdoor locations. The lamp standard 1/8" NPS thread allows for installation into a variety of fixtures with standard lamp hardware.

Programming is done with a PC application, and a custom IR Transmitter. This allows for easy field programming of the flicker effect after installation.

This unit should be installed where the top of the lamp is not visible. If a shade is used, a white or frosted shade will give the best results. Amber or Ivory shades will reduce the noticeable hue shifting effect.

Hue Shifting / Adjustable Color Temperature

The Huge Shifting function varies the Color Temperature based on intensity for a more realistic flame, or the CCT may be adjusted anywhere between 2200 (Warm white) and 1800K (Amber)

Flicker Flame

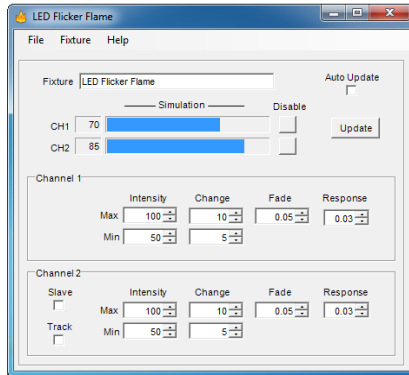
Realistic Flicker flame, Fire, and Candle effects can be created for each fixture. The effects are individually programmable with a variety of modes to simulate anything from glowing coals, to a raging inferno. No lookup tables or pre-recorded effects are used; each channel is truly random and unique.

Wet Locations

The fixture is completely sealed for use outdoors and in wet locations. (Not intended for underwater use)

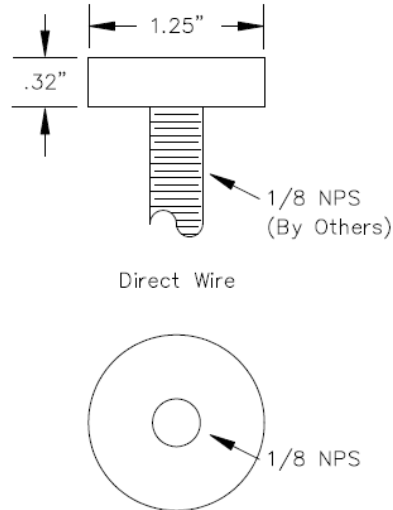
Programming:

The included PC application and IR Remote allows for easy programming from a PC or Laptop.



Dimensions / Mounting:

The lamp has a 1/8" NPT threaded base and is supplied with 24" #24AWG Leads for direct installation.



Specifications:

Power Input: 5V DC 150ma
 Environment: Dry, Damp, or Wet location versions.

Ordering Information:

Fixtures are custom made for specific applications, including color temperature, mounting, and remote interfacing.

TC-AT-150-HS-WL Hue Shifting with 24" wire leads and 1/8 NPS thread base, with 5V power supply. (All thread not included)

Products can be custom engineered to meet your requirements.
 Contact us to discuss your application.

CHTC Enterprises, LLC
 20130 NW Nestucca Dr.
 Portland, OR 97229 USA

www.CHTC Enterprises.com
 503-350-0704
 sales@chtcenterprises.com

© 2019 CHTC Enterprises, LLC All Rights Reserved.
 Specifications subject to change without notice.
 Specification applicable to standard products only.
 Information furnished is believed to be accurate and reliable.
 However, no responsibility is assumed for its use.

