

## Features

- Self contained flicker fixture.
- 40 Lumens
- Flicker Flame functions with programmable Levels, Randomness, and Fade Rate.
- No external controller required
- Wireless IR Programming
- Hue Shifting
- E12 Candelabra Base



## Description:

The TC-E12 Flicker lamp is a small compact fixture for hiding into candles, teacups or other tight locations. The candelabra base allows for installation into a variety of fixtures with standard lamp hardware.

Programming is done with a PC application, and a custom IR Transmitter. This allows for easy field programming of the flicker effect after installation.

### Hue Shifting / Adjustable Color Temperature

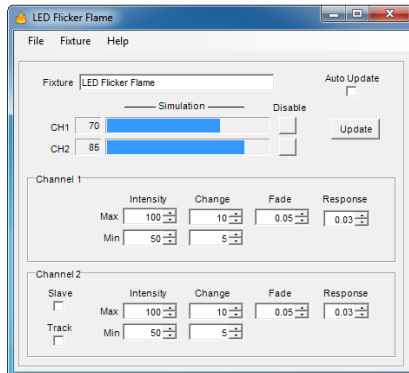
The Hue Shifting function varies the Color Temperature based on intensity for a more realistic flame, or the CCT may be adjusted anywhere between 2200 (Warm white) and 1800K (Amber)

### Flicker Flame

Realistic Flicker flame, Fire, and Candle effects can be created for each fixture. The effects are individually programmable with a variety of modes to simulate anything from glowing coals, to a raging inferno. No lookup tables or pre-recorded effects are used; each channel is truly random and unique.

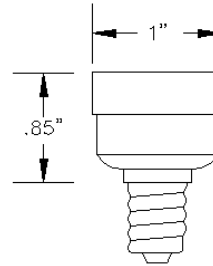
## Programming:

The included PC application and IR Remote allows for easy programming from a PC or Laptop.



## Dimensions / Mounting:

The lamp is supplied with an E12 Candelabra base.



## Specifications:

Power Input: 5V DC 150ma  
 Environment: Dry, Damp, or Wet location versions.

## Ordering Information:

Fixtures are custom made for specific applications, including color temperature, mounting, and remote interfacing.

TC-E12-150-HS Hue Shifting with E12 Base

Products can be custom engineered to meet your requirements.  
 Contact us to discuss your application.

CHTC Enterprises, LLC  
 20130 NW Nestucca Dr.  
 Portland, OR 97229 USA

www.CHTC Enterprises.com  
 503-350-0704  
 sales@chtcenterprises.com

© 2019 CHTC Enterprises, LLC All Rights Reserved.  
 Specifications subject to change without notice.  
 Specification applicable to standard products only.  
 Information furnished is believed to be accurate and reliable.  
 However, no responsibility is assumed for its use.

