

## Features

- Self contained flicker lamp.
- Frosted Glass Candelabra
- Anodized Aluminum Base
- Weather resistant (IP54)
- 110 Lumens 2200K 80CRI  
other color temperatures available
- Flicker Flame functions with  
programmable Levels, Randomness, and  
Fade Rate.
- Vertical LED Configuration to enhance  
flame movement.
- No external controller required
- Optional Hue Shifting
- Optional DMX-512 Control
- Wireless IR Programming
- E26 Medium Base



TCL-E26

## Description:

The TCL series closely resemble a traditional Candelabra bulb with no visible LEDs. The unique vertical LED Configuration adds additional spacing between the two flicker circuits to enhance the sense of movement. The E26 base allows for easy retrofits into existing fixtures by using a 12VDC power supply which may be retrofitted into the existing fixture

Programming is done with a PC application, and a custom IR Transmitter. This allows for easy field programming of the flicker effect after installation.

### Flicker Flame

Realistic Flicker flame, Fire, and Candle effects can be created for each lamp. The effects are individually programmable with a variety of parameters to achieve a wide variety of effects, from a subtle to an energetic effect. No lookup tables or pre-recorded effects are used; each lamp is truly random and unique, so multiple lamps programmed with the same parameters will behave independently.

### Hue Shifting / Adjustable Color Temperature

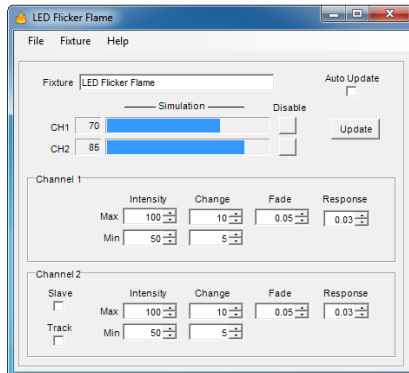
The Huge Shifting function varies the Color Temperature based on intensity for a more realistic flame, or the CCT may be adjusted anywhere between 2200 (Warm white) and 1800K (Amber)

### DMX-512 Control

The flicker effect can be modified by a remote DMX-512 controller. Any of the flicker effect settings may be mapped to a DMX-512 dimmer channel.

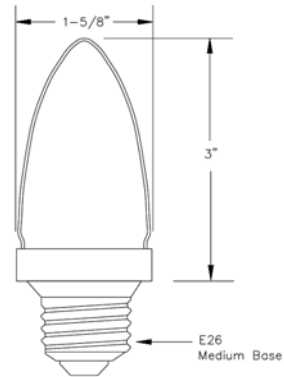
## Programming:

The included PC application and IR Remote allows for easy programming from a PC or Laptop.



## Dimensions / Mounting:

The lamp is supplied with a standard E26 Medium Base Socket. Other configurations are available.



## Specifications:

Power Input: 12VDC 350ma  
 Environment: Dry or Damp Locations

## Ordering Information:

TCL-E26-150 2200K Color Temperature  
 TCL-E26-150-HS Hue Shifting (2200K – 1800K)

Other color temperatures are available.  
 Products are custom engineered to meet your requirements.  
 Contact us to discuss your application.

Products are custom engineered to meet your requirements.  
 Contact us to discuss your application.

CHTC Enterprises, LLC  
 20130 NW Nestucca Dr.  
 Portland, OR 97229 USA

www.CHTC Enterprises.com  
 503-350-0704  
 sales@chtcenterprises.com

© 2018 CHTC Enterprises, LLC All Rights Reserved.  
 Specifications subject to change without notice.  
 Specification applicable to standard products only.  
 Information furnished is believed to be accurate and reliable.  
 However, no responsibility is assumed for its use.

